

# SUN2000L COMMISSIONING GUIDE EU

This document describe the steps for commissioning the SUN200L inverters. The mobile phone application used for commissioning the SUN2000L is called FusionHome app (app for short), which communicates with the SUN2000L over WiFi to provide a convenient platform for querying alarms, configuring parameters and performing routine maintenance.

After the DC and AC side of the SUN2000L is energized you can start the commissioning procedure.

## Procedure

### 1. Downloading and install the FusionHome APP

Search for **FusionHome** in one of the following app stores, download the installation package, and install the FusionHome App by following the instructions.

- Huawei App Store (Android)
- Google Play (Android)
- App Store (iOS)



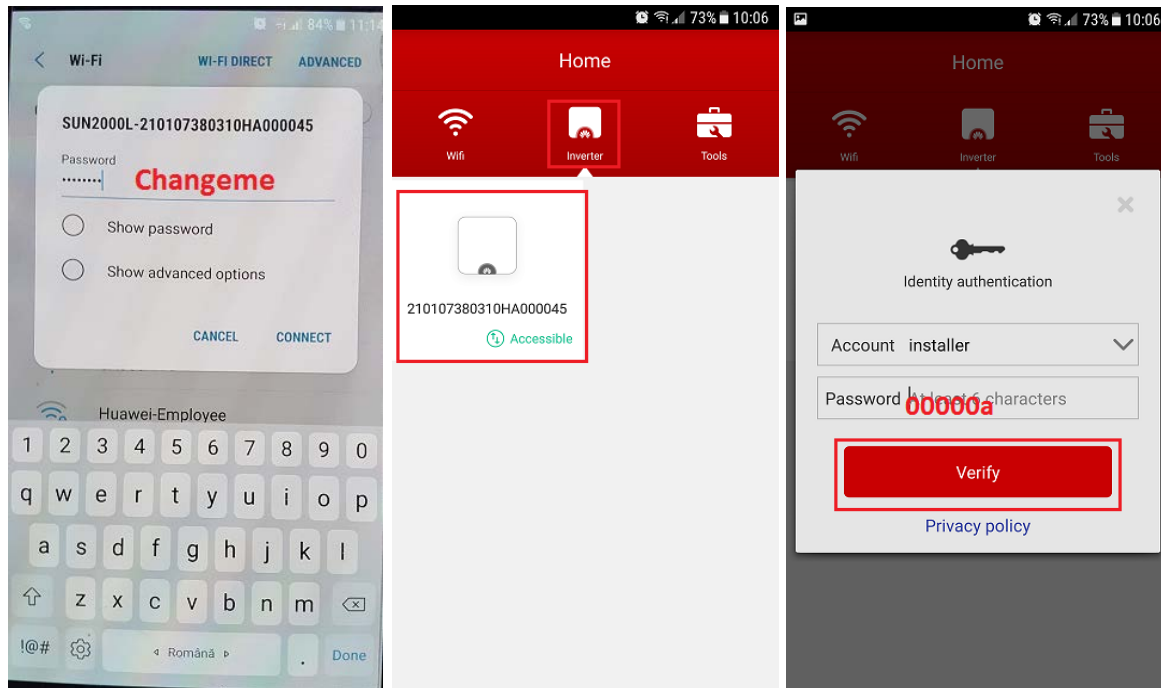
After the app is installed, the FusionHome icon (  ) is displayed on the home screen.

### 2. Connecting to the SUN2000L

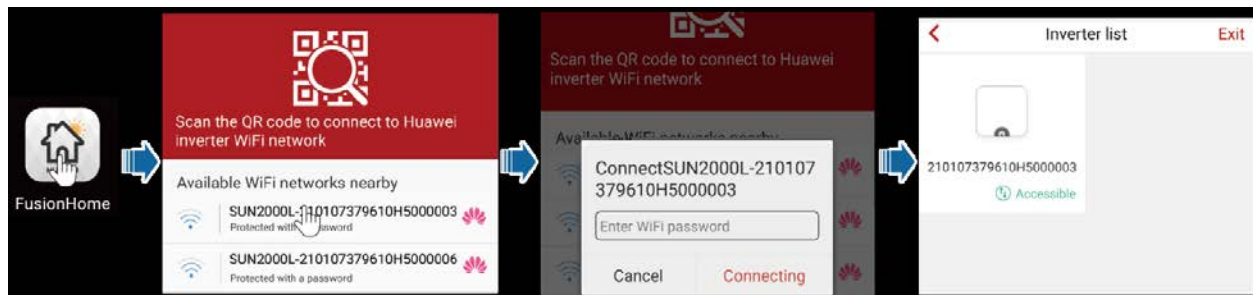
Activate WiFi on your phone, tap the WiFi name corresponding to the SUN2000L, and enter the WiFi password to connect to the WiFi network. After the connection succeeds run the FusionHome App and the **Inverter list** screen is displayed.

The name of the connected SUN2000L WiFi network is represented by **SUN2000L-its serial number (SN)**. The SN is available on the label attached to the side of the SUN2000L.

- Use the initial password **Changeme** upon first login. To ensure account security, change the password immediately after login.

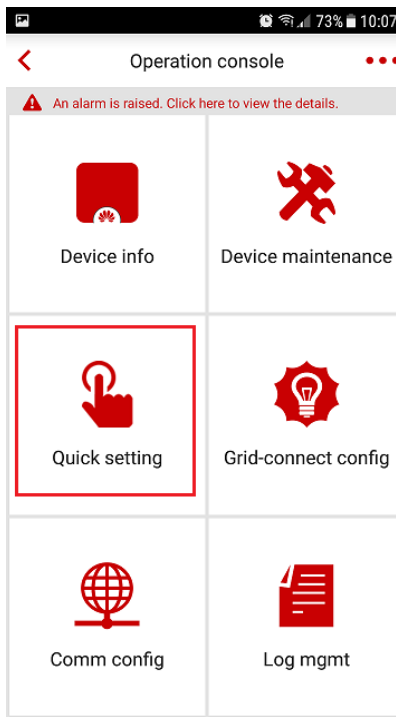
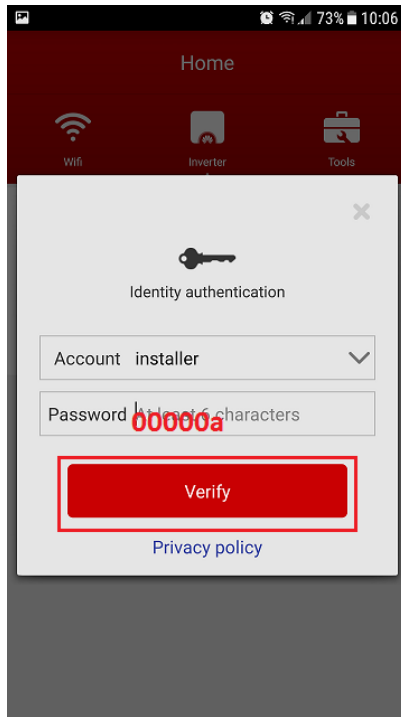


- If you log in for the first time and the initial SUN2000L WiFi password is not changed, you can scan the WiFi login QR code on the side of the SUN2000L to connect to the SUN2000L WiFi network.



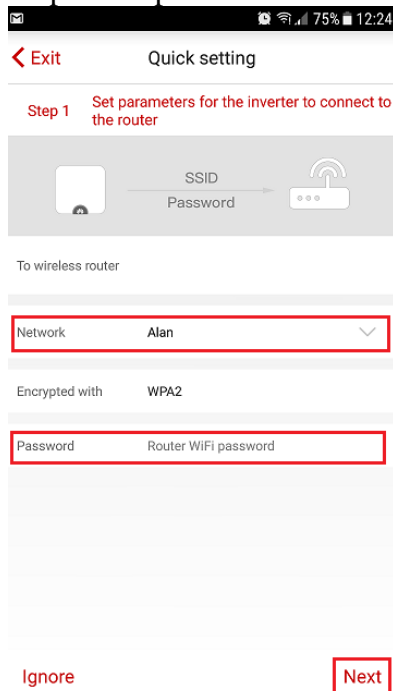
### 3. Login to the APP

On the Inverter list screen, tap the corresponding SUN2000L, select installer, enter the password, and then tap Verify. The initial password is **00000a**. Use the initial password upon first login. To ensure account security, change the password immediately after login.



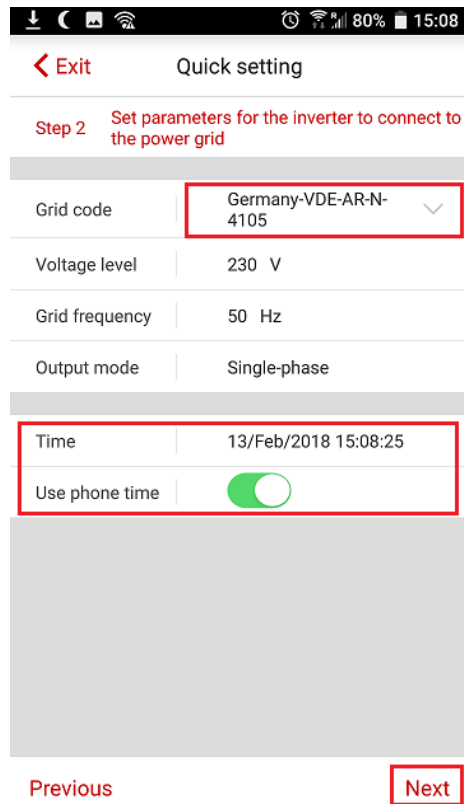
Select the Quick settings and follow the steps to set your inverter:

Step 1. Set parameters for the inverter to connect to router WiFi.



Tap first the Network and choose your WiFi network and after that tap Password and set your WiFi password and then select “Next”.

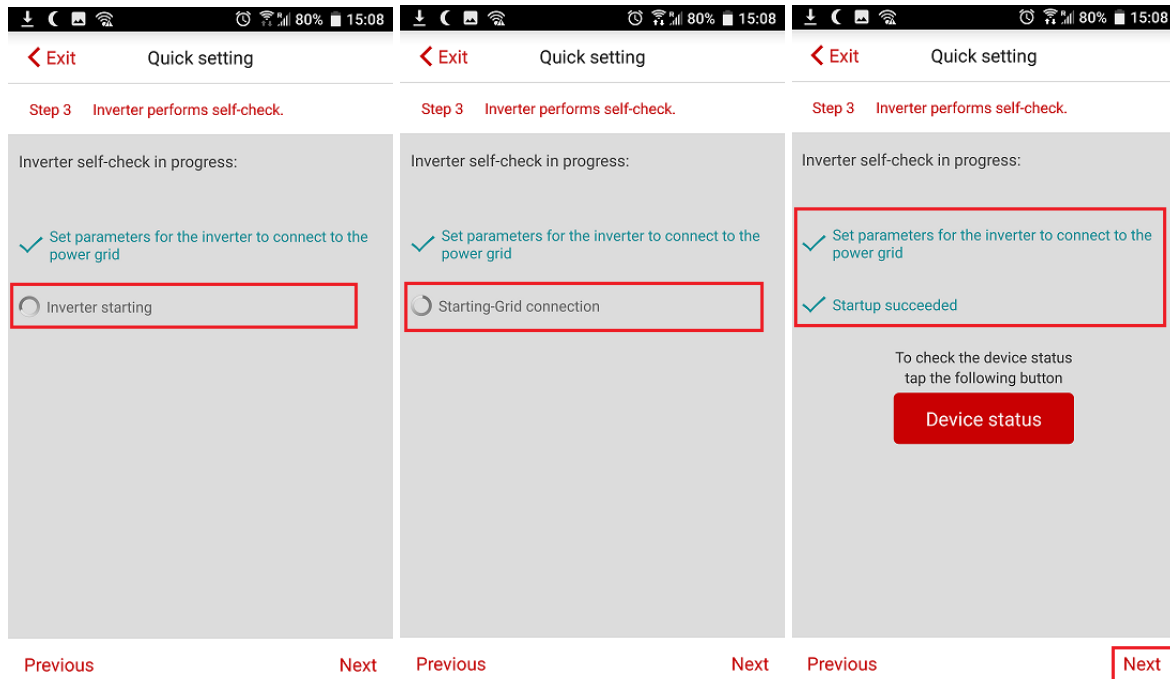
Step 2. Set parameters for the inverter to connect to the power grid.



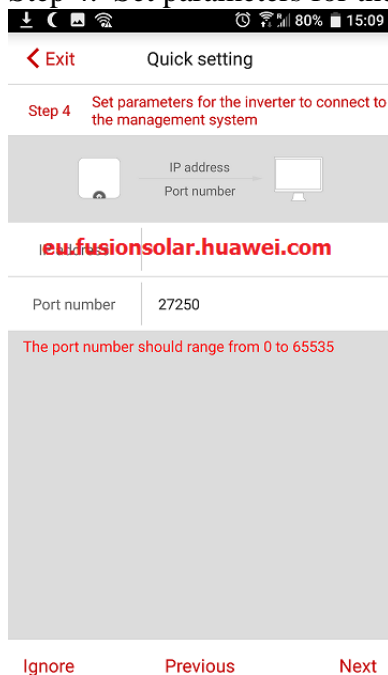
Tap the grid code and set accordingly with your country grid code, assure that the “Use phone time” is enable and then select “Next”.

Step 3. Inverter performs self-check

After you set the grid code the inverter start self-check and after this operation successfully finish select “Next”.

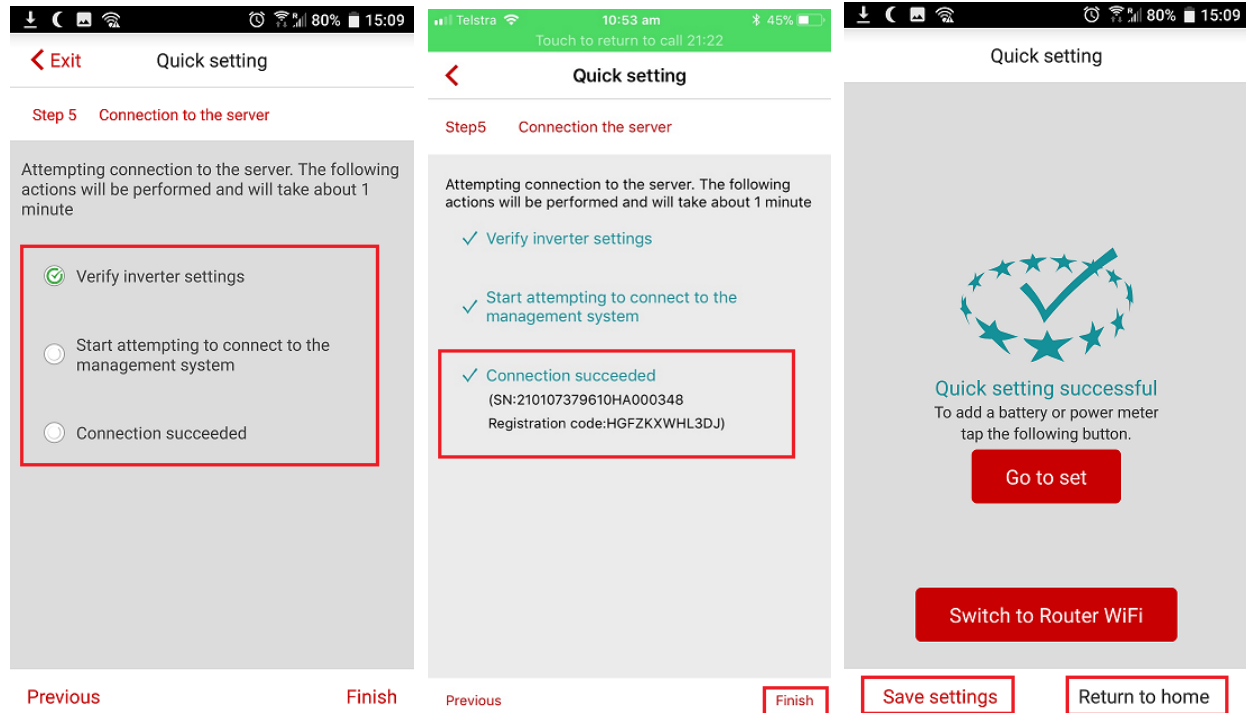


#### Step 4. Set parameters for the inverter to connect to management system (NetEco)



Tap the IP address and set the next link: eu.fusionsolar.huawei.com. Assure that the port number is 27250 and select “Next”.

#### Step 5. Connection to the server



After you set the IP inverter start to verify the settings and connect to the management system NetEco and generate a registration code that together with SN will help you to create an account on NetEco. **Please note and keep the registration code generated because without this you can't create the account on NetEco.** Contact the service team to received information about how to create an account on NetEco.

After the connection succeeded select “Finish” and the quick settings will successful finish and you can save the settings. Select “Return to home” to return on operation console and verify the inverter status.

