

How to create an account on NetEco EU

This document describe how to create an account on Neteco monitoring portal after you finish commissioning the inverter with FusionHome application.

Procedure:

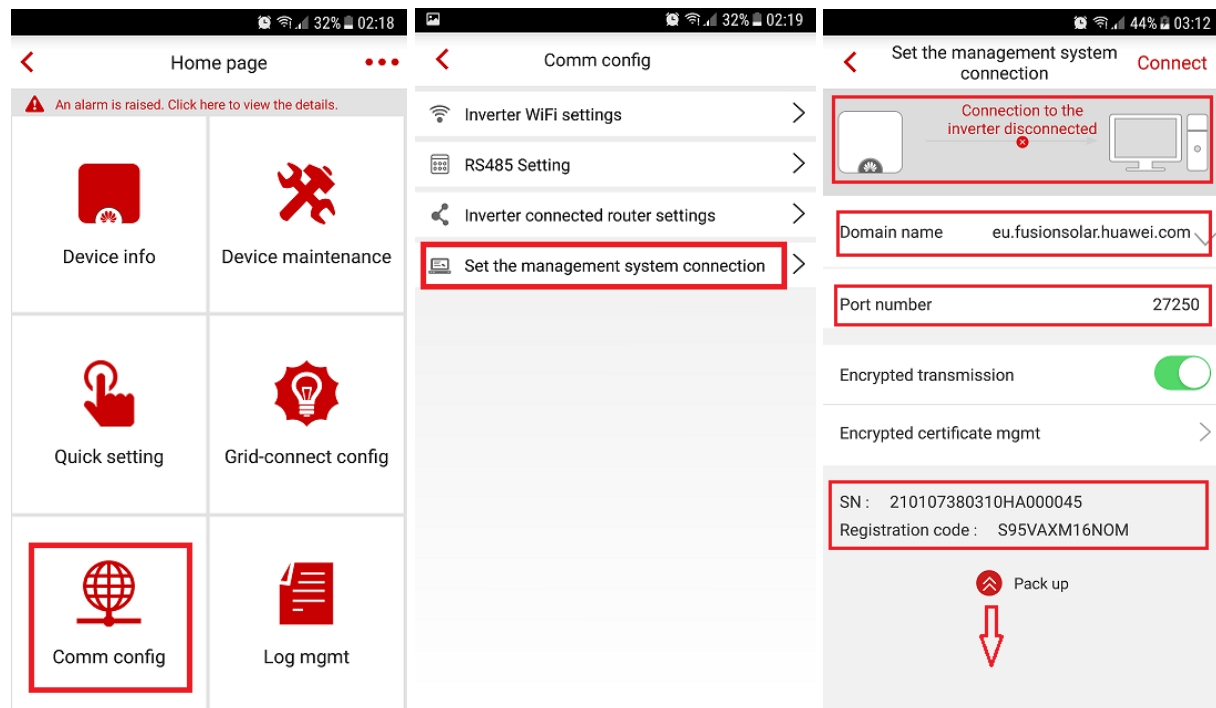
1. Set the Neteco IP server

If you do not set the Neteco IP server and the port on the step 4 of commissioning process then follow the next steps to configure:

1.1 From the home page choose “Comm. config.”->Set the management system connection-> set at “Domain name” eu.fusionsolar.huawei.com and assure that the port is 27250

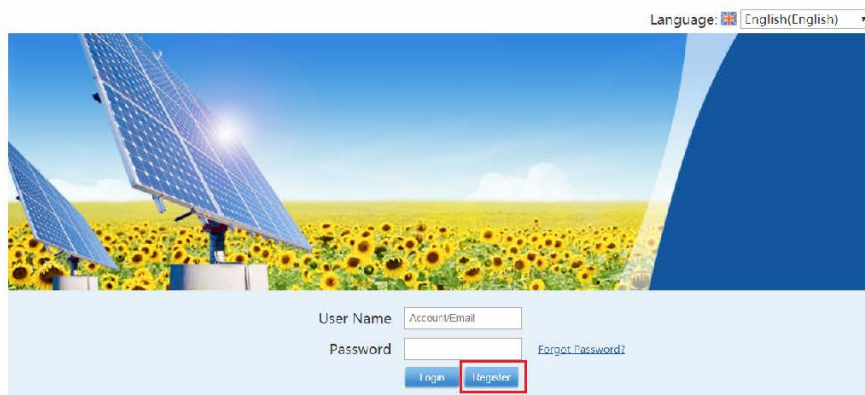
1.2 After you set the IP and port and submit inverter will connect to the server

1.3 Note the SN and registration code which will help you to create an account on Neteco.



2. Create an installer account on Neteco

Use the next link <https://eu.fusionsolar.huawei.com> to open in a browser (IE, Chrome) choose register and fill the tab with your information, serial number of inverter and registration code like below:



The current version only supports IE11 and Chrome 50. If other web browsers are used, GUIs may be displayed incorrectly.

Copyright © Huawei Technologies Co., Ltd. 2012-2018. All rights reserved

Fill the form with requested data and choose register.



Like an installer with this account you will be able to monitor all the installed inverters and to create PV plants and accounts for the customer. You do not need to create another account for the following installations, with this account you can create plant and user accounts.

3. Create PV plant on Neteco

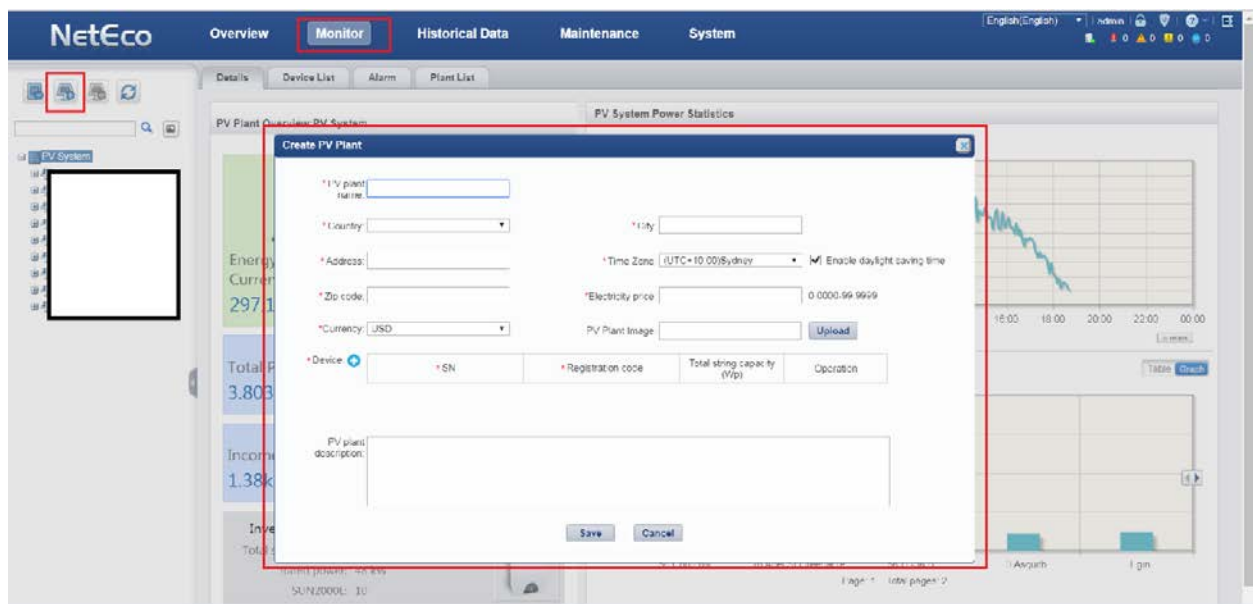
After you create the installer account you need to create the PV plant on Neteco with the inverter details like below:



Add plant: choose Monitor menu->select from the left corner->fill the requested data on the 'Create PV Plant' form and save.

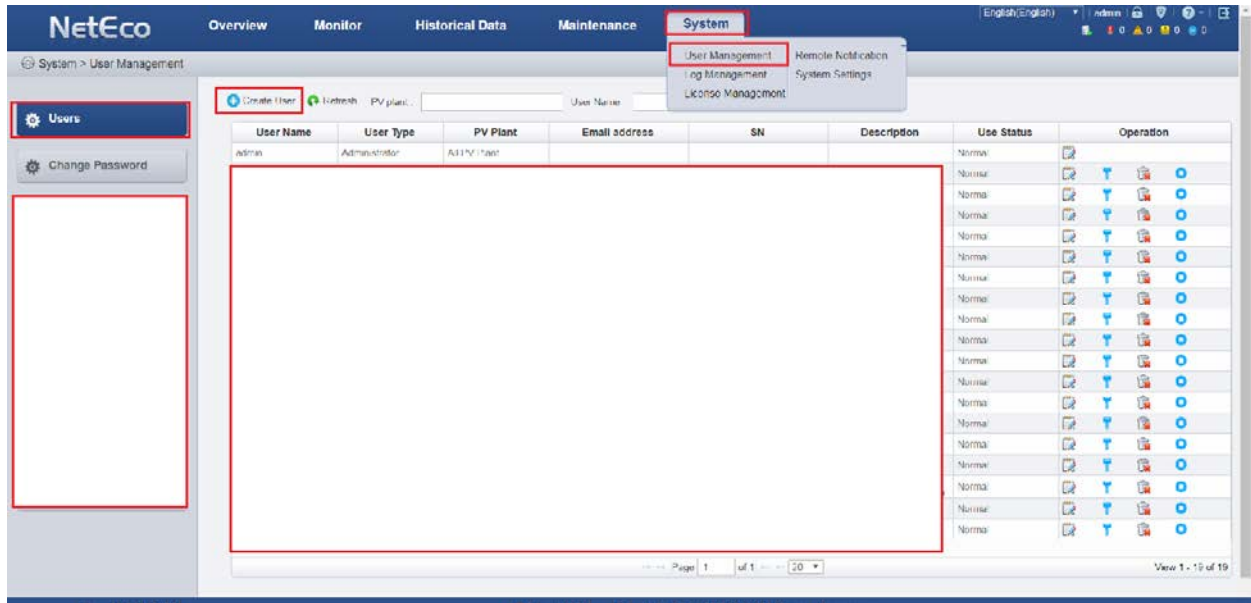
Use the SN of the installed inverter and registration code that you note when set the IP server.

Please note that you can't create the PV plant without SN and registration code.

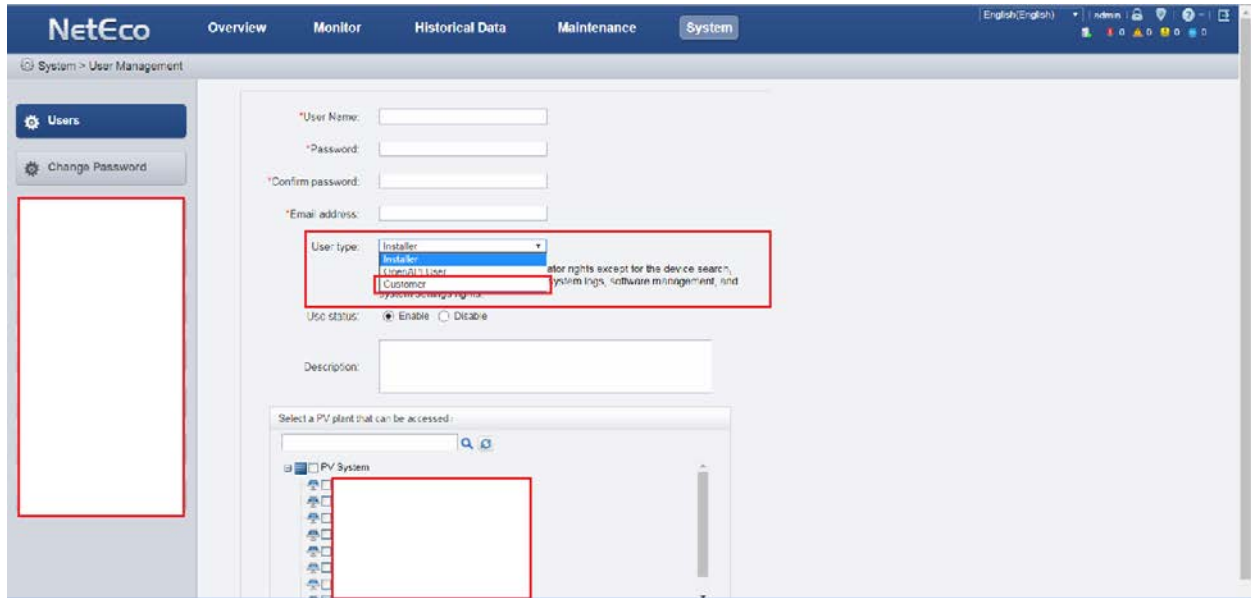


4. Create the account for the customer

From the main page choose System menu->User management->Users->Create user



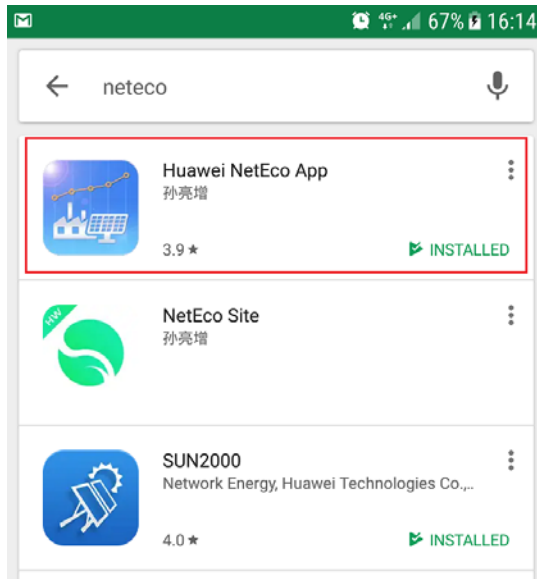
Fill the form with user name, password, email address and chose the user type “Customer” and save.



Send to the customer the user name and password and inform him that he need to change the password when he will connect for the first time.

5. Connect on NetecoAPP

Download and install the NetecoAPP from Play Store (Android) or Apple Store (Iphone).



After you install the NetecoAPP with the same user name and the password created before for the customer, he can connect on NetecoAPP and monitors the inverter on phone.

